

# Project 02

---

## DOWNLOADING AND INSTALLING SOFTWARE

# Summary

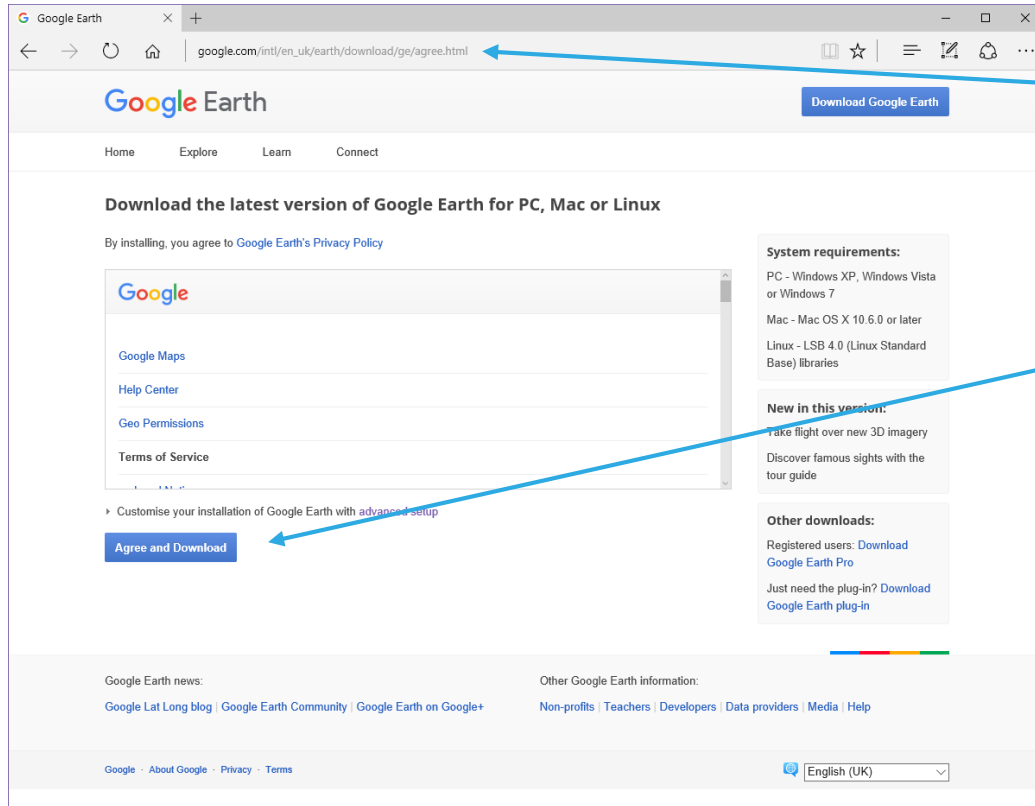
---

- It's less common than it used to be, but sometimes the best experience is to run programs locally rather than online
- That's especially true for software that processes a large amount of information
- Also, some 'utility' software (like cCleaner) has to run locally on your PC
- ⓘ BE CAREFUL – downloading and installing software makes (maybe permanent) changes to your PC (or 'phone/tablet)
- Your browser and/or anti-virus software should alert you to dangers but ..
- ... only download from reputable websites
- If in doubt **DON'T** ... ask a knowledgeable friend first

The process:

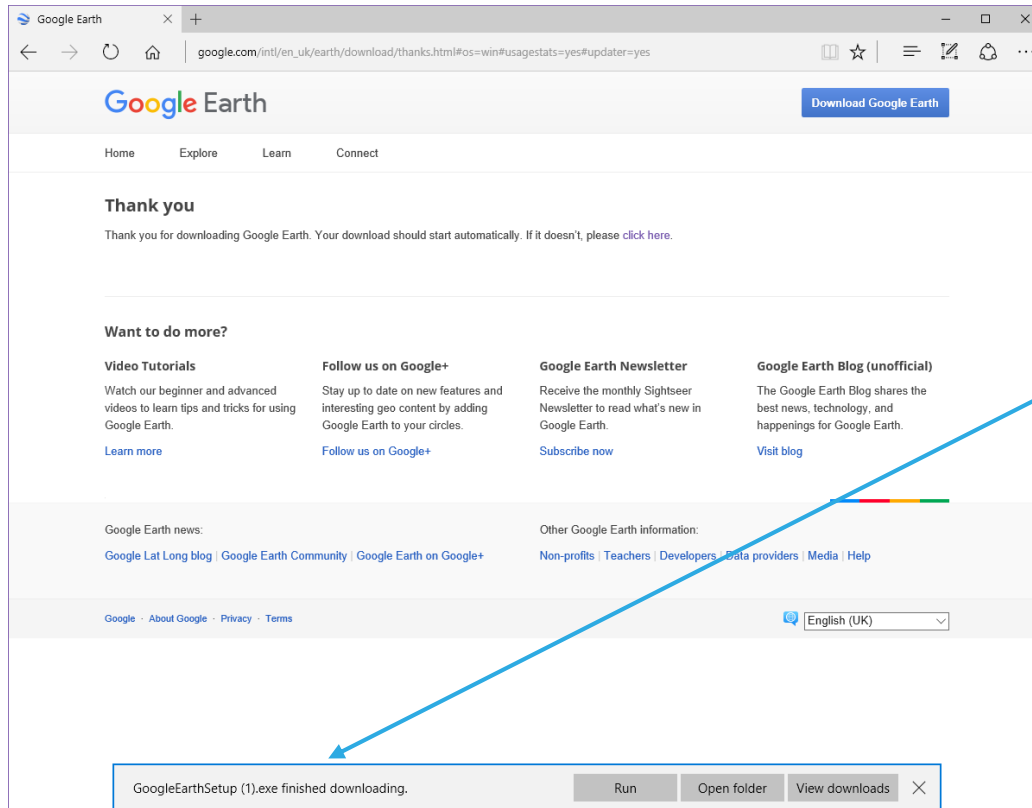
1. Open a browser
2. Navigate to the download site
3. Read the Ts & Cs
4. Click the "download" (or similar) button
5. Locate the downloaded file (it will usually be a .exe file type)
6. Double-click it to run (you will need administrator user rights)
7. Follow the instructions – be careful that some choices are not pre-selected (e.g. some Microsoft software like Skype tries to change your default search engine from Google to Bing – naughty!)

# Download and install Google Earth (1)



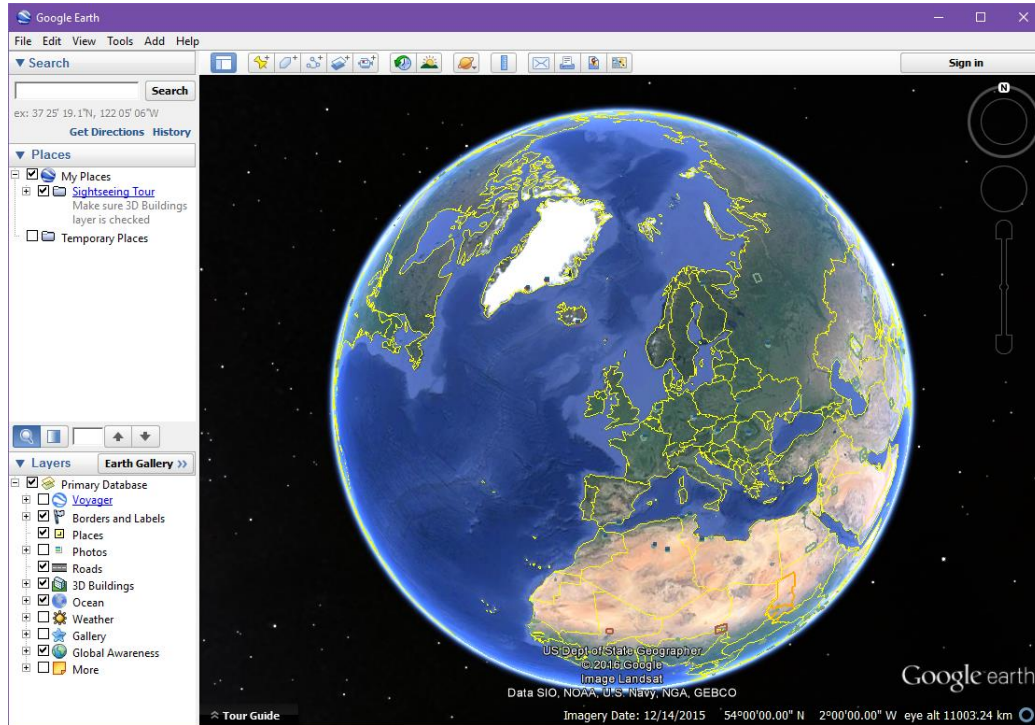
- Navigate to the download website
- Do a quick visual check on the address
- Read the system prerequisites (maybe)
- Read the Ts & Cs (if you can be bothered)
- Click the “Agree & Download” button

# Download and install Google Earth (2)



- The installer file downloads (it's not actually the software ... it's software to install the software!)
- Your browser may do a security scan (Microsoft Edge certainly did here)
- You get a notification that the download is complete – how this appears varies from browser to browser
- Note the file type (.exe) – what I expect
- You can then run the file – either by clicking on the “Run” button or double clicking on the file – depending on your browser
- You will the get an alert from Windows asking you to confirm you want to install

# Download and install Google Earth (3)



- Stuff happens!
- The installer file downloads the full Google Earth package
- Various dialogue boxes appear and disappear
- Google Earth launches itself
- and may put an icon on the desktop
- Over a reasonably fast broadband line the end-to-end process should take less than 5'